

Closing the NSW border

Permits for people who still need to come to NSW

An Easy Read guide



How to use this guide



The New South Wales (NSW) Government wrote this guide.

When you see the words 'we' or 'us', it means the NSW Government.



We wrote this guide in an easy to read way. We use pictures to explain some ideas.

Not Bold
Bold

We have written some words in **bold**.

This means the letters are thicker and darker.



We explain what these words mean.

There is a list of these words on page 16.



You can ask for help to read this guide.

A friend, family member or support person may be able to help you.

Closing the border between NSW and Victoria



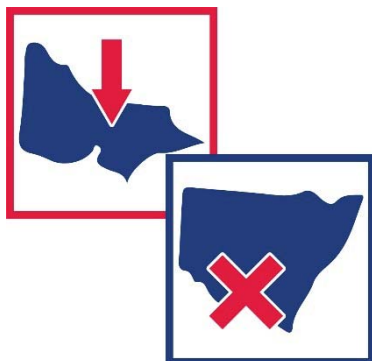
The border from Victoria into NSW closed on Wednesday 8 July.



The border between NSW and Victoria will only close for a short time.



We don't know when the border will open again.



This means people who live in Victoria:

- must stay in Victoria
- can't enter NSW.



People who have been in Victoria in the last 14 days won't be allowed to come into NSW.



You will need a permit to cross the border if you live in NSW but are in Victoria now.



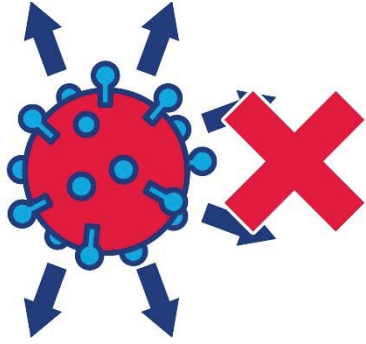
We talk about permits on page 11.



When you come into NSW, you must self-isolate for 14 days.



We talk about self-isolating on page 13.



We have done this to stop the spread of COVID-19.



We have also done this to protect people who live in NSW.

Who can come into NSW?



Some people still need to come into NSW.



But many people will need permits to come into NSW.



We talk about permits on page 11.



People who provide emergency services don't need a permit to come into NSW.



Police officers don't need a permit to come into NSW.



You need a permit to come into NSW to:

- see a doctor
- go to hospital.

You don't need a permit to come into NSW if:



- you might be hurt by someone or something



- it's an emergency and you need to:
 - see a doctor
 - go to hospital.



Some people live in a special area along the border between NSW and Victoria.

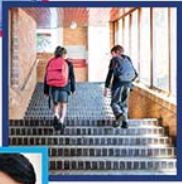
We call it the **border zone**.



We call people who live in these areas **border zone residents**.



Border zone residents must have a permit to come into NSW.



These permits let border zone residents come into NSW if they need to:

- work, for example provide disability support services
- study or learn
- see a doctor or go to hospital
- give someone care they need
- get care they need.



These permits also let border zone residents come into NSW to support someone who has problems with:

- their mental health
- domestic violence.



These permits also let border zone residents come into NSW to get support for problems with:

- your mental health
- domestic violence.



People who provide important services must have a permit to come into NSW.

Important services include:



- the transport and delivery of things people need



- health and medical care



- mining



- growing food



- building and construction services



- energy services



- factories that build or make things people need.

Permits to come into NSW



If you want to come into NSW, you must apply for a new permit.



You can visit our website to apply for a permit.



www.service.nsw.gov.au/transaction/apply-covid-19-nsw-border-entry-permit



A lot of people have already applied for permits.



If you have your permit, you must show it to police when you want to cross the border into NSW.



If you don't have your permit yet, you can show police other proof of why you must cross the border into NSW.

What happens when you cross the border?



If you self-isolate, you don't:

- leave your home
- see other people.



You must self-isolate if:

- you cross the border into NSW
- your permit says you must self-isolate.



Many people will need to self-isolate for 14 days after coming into NSW.



You can leave your home if there is an emergency.

You can only leave your home if you need:



- health or medical care



- medical supplies.



You should stay at least 1.5 metres away from other people.



While you self-isolate you should not have any visitors.



You should only let people visit you if they:

- give you care and support you really need
- bring you food or other items you really need.

Word list



Border zone

Some people live in a special area along the border between NSW and Victoria.

We call it the **border zone**.

We call people who live in these areas **border zone residents**.

Self-isolate

If you self-isolate, you don't:

- leave your home
- see other people.



Contact us



You can call us to get more information.



13 77 88 (Service NSW)



You can call us:

- 24 hours a day
- 7 days a week.



www.nsw.gov.au



The Information Access Group created this Easy Read document using stock photography and custom images. The images may not be reused without permission. For any enquiries about the images, please visit www.informationaccessgroup.com. Quote job number 3645.